



Backer Plates Installation Instruction Sheet

Please Read Carefully

Our Backer Plates are designed to fit behind the cut-out on your 3G metal product.

We strongly recommend that prior to prep and paint you do a test fitment first.

Make sure it fits correctly and there no interferences.

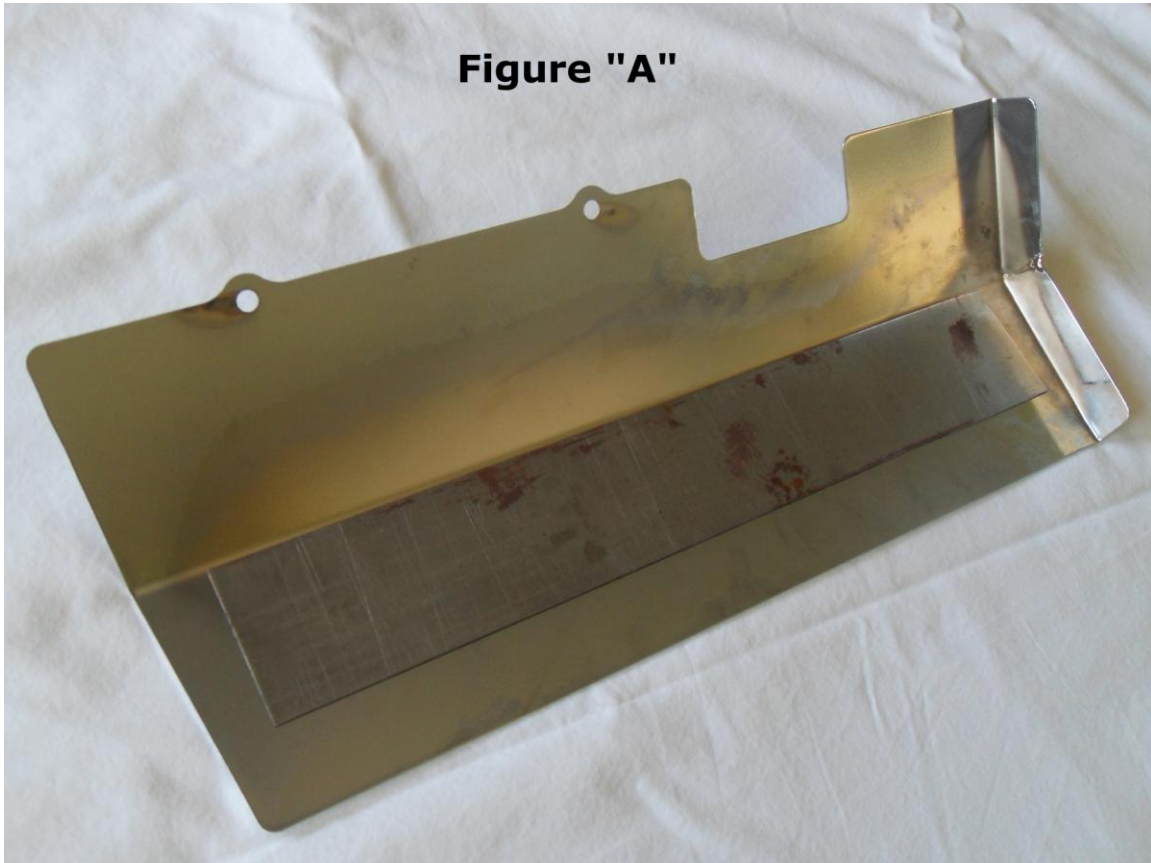
Letter or Number Centers

When your cutout contains letters or numbers with centers that fall out such as an A, B, O, P, 8 etc., we will ship those centers separately and you will be responsible to epoxy glue them into their proper position onto the backer plate.

Once the backer plate and all loose pieces are painted and prepped for epoxy gluing you will install the backer plate first. After it has cured and dry then you will install the loose center pieces.

Installing the Backer Plates

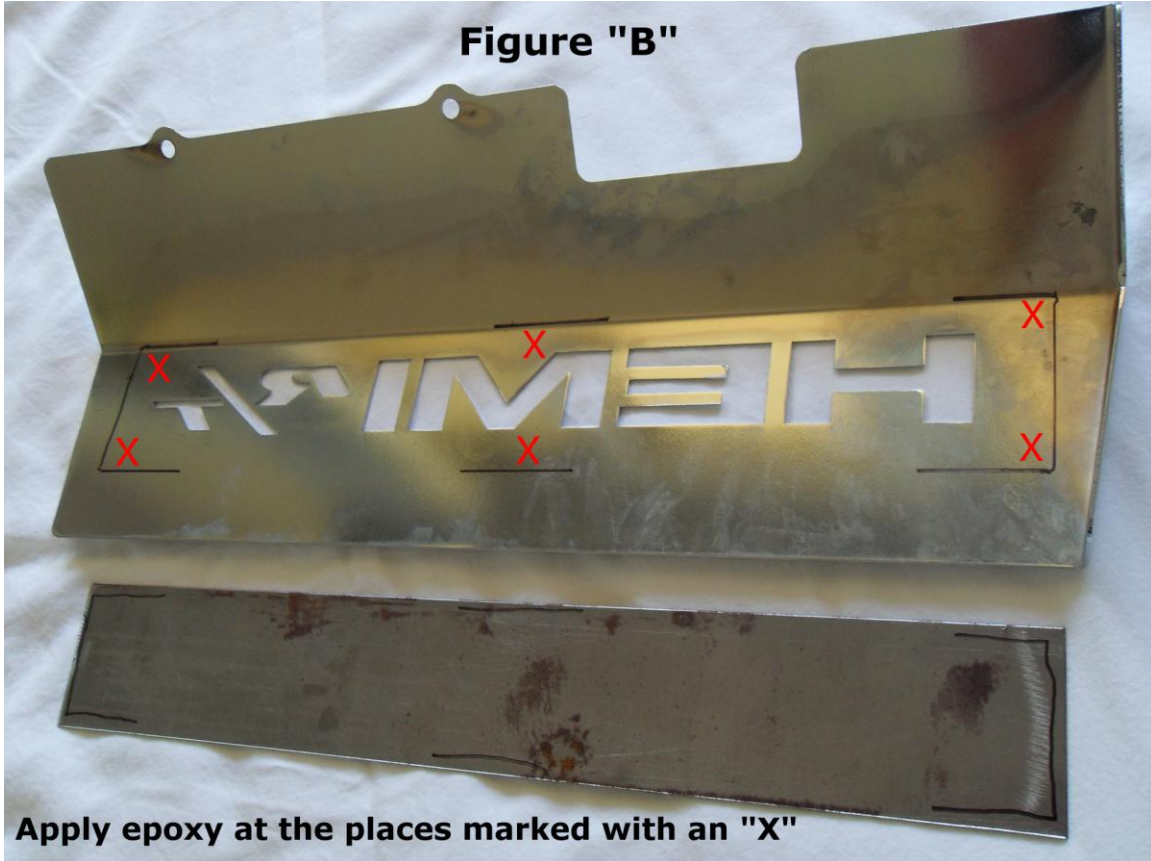
Turn your part over and position the backer plate so that it is centered from top to bottom and from left to right over the cutout shown in figure "A".



The backer plates come in different sizes depending on what cutout you have so choose where you think the best places are to glue the backer plate. We recommend gluing both the right and left sides.

Trace the areas where the epoxy will be applied with a pencil or marker as shown in figure "B".

Figure "B"



Apply epoxy at the places marked with an "X"

On larger backer plates also include the top and bottom of the plate on center as also shown in figure "B".

Here are some recommended places to apply the epoxy on various other sizes of backer plates. Figure "C".

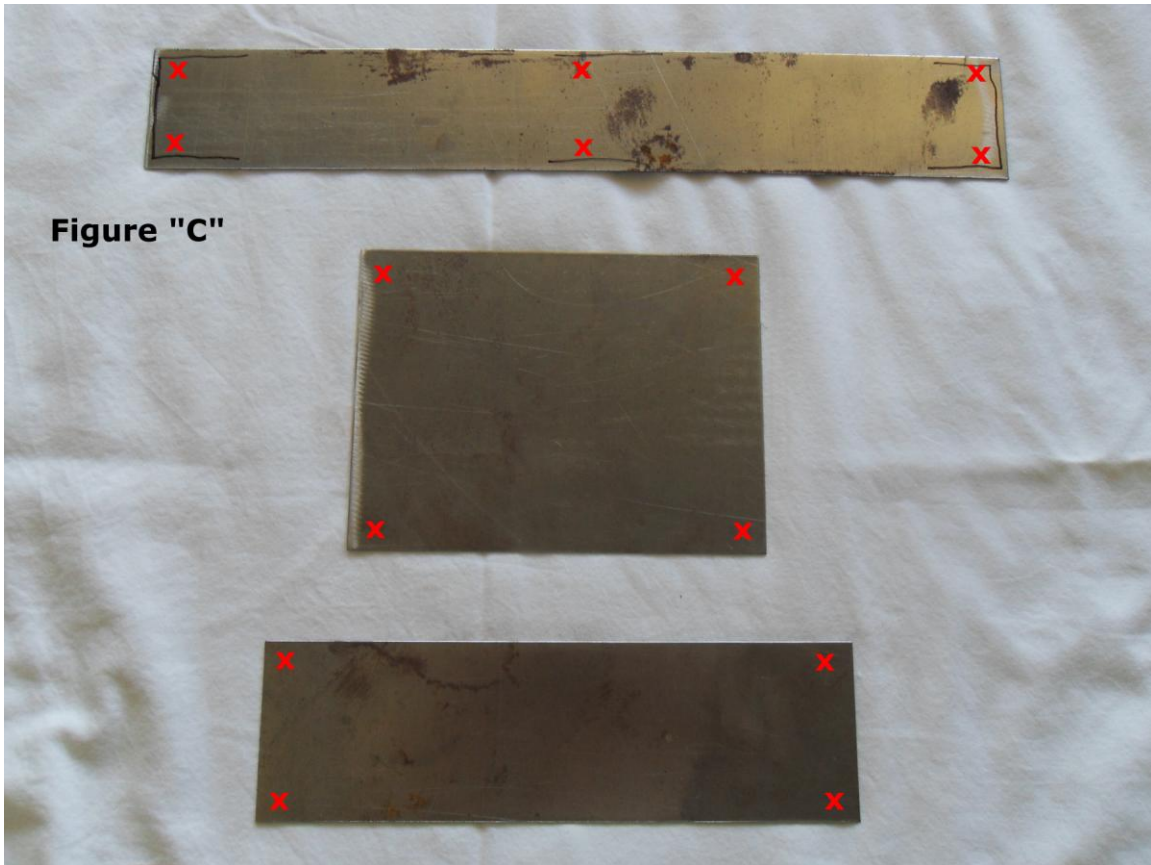
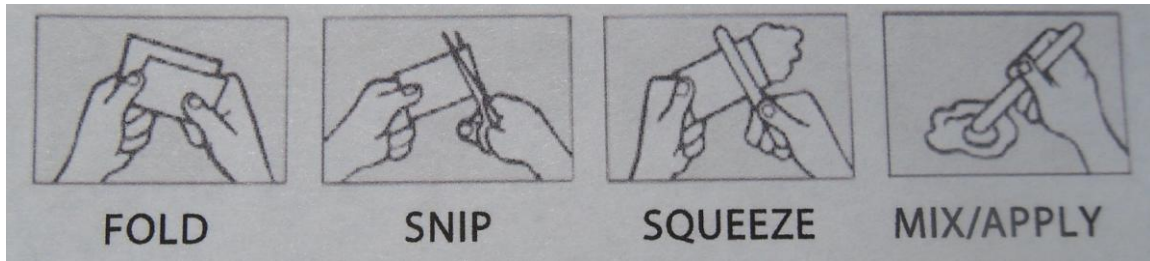


Figure "C"

Clean and dry the surface before application. Remove all chemicals, dirt, wax and oils. If painted we recommend sanding down to bare metal.



Now take the package of epoxy and fold it in two.

Take a pair of scissors and snip the very end off.

Take the mixing stick and squeeze both parts out onto a paper plate or piece of cardboard.

Using the mixing stick and mix the two parts thoroughly.

Apply the epoxy to your prepared surfaces.

Place the backer plate into position and press firmly and hold into position for at least one minute.

Let cure for at least one hour before handling.

Make sure the epoxy is cured and dry before installing your part. This can be determined by pressing your fingernail into the epoxy if it does not leave a mark it is cured and dry.

The following was included in the shipping container

- (1) 3GCUSTOMZ Epoxy packet
- (1) 3GCUSTOMZ Epoxy mixing stick
- (If Required) Letter or Number Centers
- (1) Instruction/installation sheet