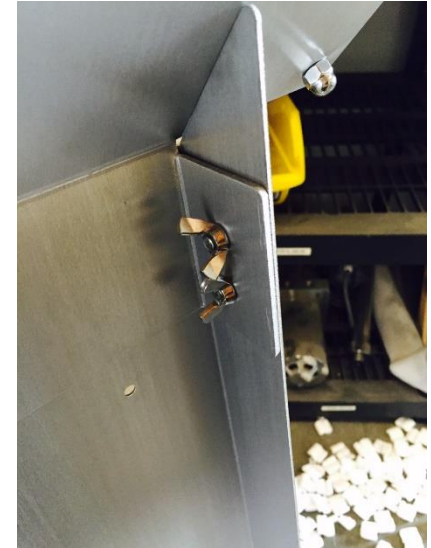
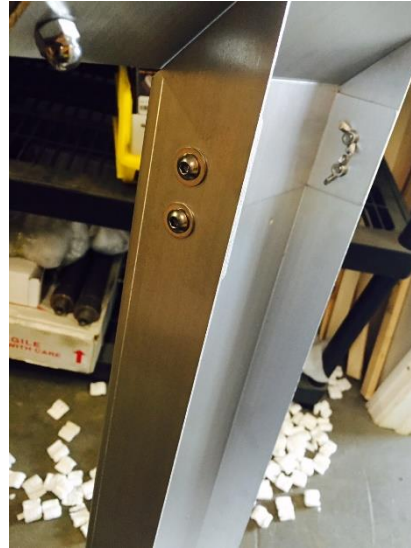




## Car Show Information Stand Assembly Instructions

1. Place one washer on a bolt, then insert it through the main body and stand, use a wingnut to tighten from the backside of the stand. Repeat for the top of the stand as well. There should be a total of 8 bolts (4 top, 4 bottom) that hold the stand together



2. Place one washer on a bolt, then insert it through the Plexiglass and top, use a acorn nut to tighten from the backside of the stand. Repeat process for all 4 corners





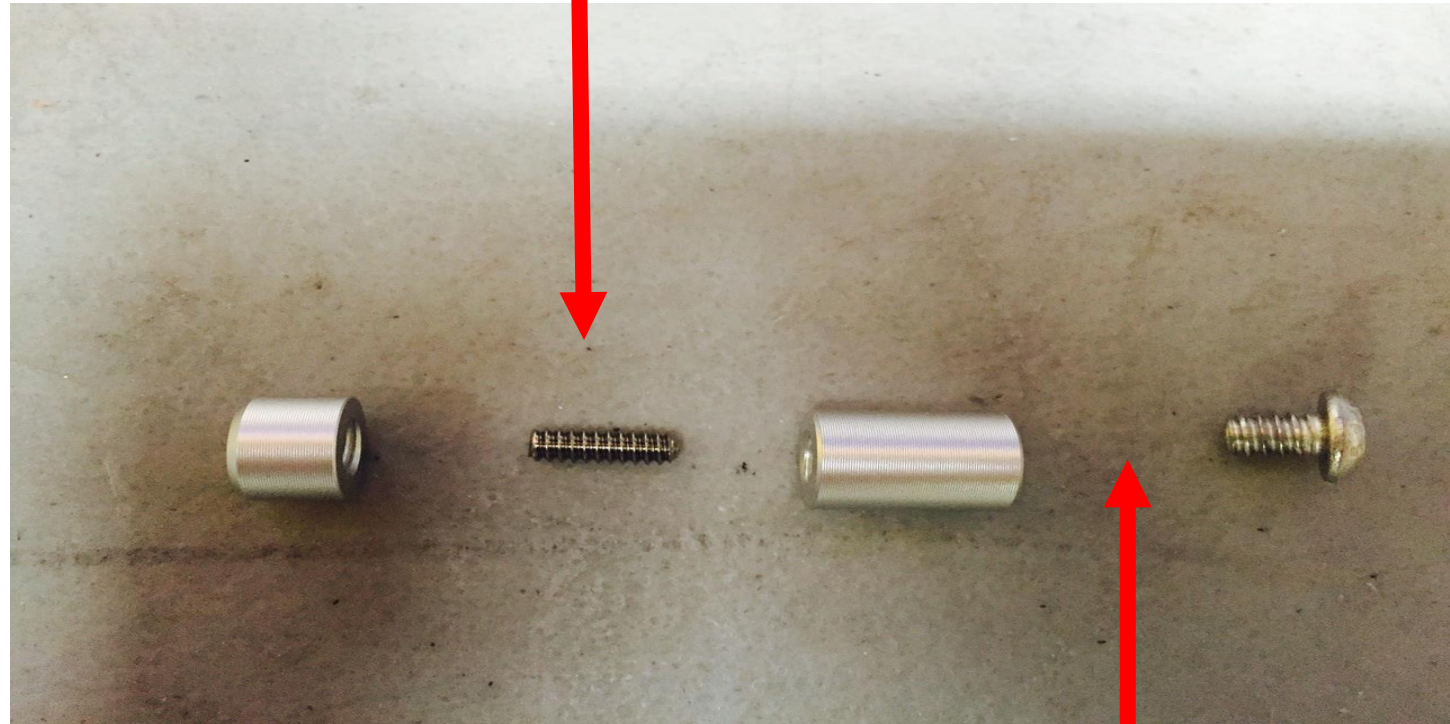
## Car Show Information Stand Assembly Instructions

3. Take the set screw and screw it into the alum. cap, then insert it through the stand off plate so the cap is on the front side of the stand-off plate.

4. Screw the barrel screw into the exposed end of the set screw from the cap and stand-off assembly.

5. Line the standoff plate up with the pre-drilled holes in the main body of the stand. Finally use the small screw to attach the stand-off assembly to the main body from the backside of the stand

Stand-off plate should be between the cap and barrel secured by the tightening of both parts using the set screw to connect them.



The stand-off assembly is secured to the main body using this button head screw. The screw should be inserted from the back of the main body and tightened when the stand off assembly is lined up with the pre-drilled holes.