

3gCustomz Side Splitter Installation Guide With Out Drip Edge Brackets



Models Included:

2011-2018 Chrysler 300 – All Trim Levels

2011-2018 Dodge Charger – SRT/SCAT/HC Only

2011-2018 Dodge Charger – Non SRT

3gCustomz Side Splitter Installation Guide

Please Read Carefully

Our Side Splitters are meant to install on the bottom of the rocker panel. If you have altered or damaged this area in any way then it is your responsibility to do a test fitment to confirm it will fit.

Every model and year will have some little differences therefore we strongly recommend that prior to prep and paint you install your Side Splitters and do a test fitment first. Make sure it fits correctly and there no interferences.

Be sure that you have proper clearance on the top, back, sides and bottom and nothing is rubbing.

Use all supplied hardware

While the amount of hardware and mounting location varies by model, these instructions are a general guide for the installation. Pictures may not represent your actual make/model and year.

DISCLAIMER: 3gCustomz LLC cannot control how this product is installed or used. By purchasing this product, the buyer/end user assumes all risks associated with its use and agrees to have the proper skills for its installation. 3gCustomz LLC and its suppliers will not be held responsible, liable or accountable for any injury, damage, loss, penalties, or fines that occur from using this product in any manner.



3gCustomz Side Splitter Installation Guide

1. Ensure the rocker panel is properly attached to the car. For the side splitter to sit correct all connectors to the rocker panel need to be in working order. You much examine these and replace any that may be broken prior to installation.
2. Line the side splitter up along the back drip edge of the rocker, center the splitter front to back. The wedge or have a second person hold the splitter in place.



3. Mark holes with a paint pen or sharpie.



4. Drill pilot hole



5. Drill ¼" Hole



3gCustomz Side Splitter Installation Guide



6. Install Speed Nut on
Rocker Panel

7. Once all the holes and speed nuts are installed, line the side splitter up and work front to back installing one bolt at a time. Leave these loose until all have been installed, then work back to front tightening each bolt down.

*** REMINDER - THESE ARE SIDE SPLITTERS, DO NOT ATTEMPT TO STAND OR STEP ON SIDE SPLITTERS**



8. Install bolt with washer
and lock washer

9. Once your installation is complete, it is highly recommend that you push/pull and try to flex your lip from as many different areas as possible. If you notice flex or movement it is suggest that you add additional fasteners to ensure the splitter is securely attached to the vehicle.



3gCustomz Side Splitter Installation Guide With Drip Edge Brackets



Models Included:

08-18 Dodge Challenger – All Trim Levels

06-10 Dodge Charger – All Trim Levels

05-2010 Chrysler 300 - All Trim Levels

05-2008 Dodge Magnum – All Trim Levels



3gCustomz Side Splitter Installation Guide

Our brackets are meant to install on the drip edge which will then create a flat surface for the splitter to mount too. If you have altered or damaged this area in any way then it is your responsibility to do a test fitment to confirm it will fit.

In some cases, body splash guards may need to be removed or trimmed to ensure drip edge brackets are evenly spaced.

Every model and year will have some little differences therefore we strongly recommend that prior to prep and paint you install your Side Splitters and do a test fitment first. Make sure it fits correctly and there no interferences.

Be sure that you have proper clearance on the top, back, sides and bottom and nothing is rubbing.

Use all supplied hardware

While the amount of hardware and mounting location varies by model, these instructions are a general guide for the installation. Pictures may not represent your actual make/model and year.

DISCLAIMER: 3gCustomz LLC cannot control how this product is installed or used. By purchasing this product, the buyer/end user assumes all risks associated with its use and agrees to have the proper skills for its installation. 3gCustomz LLC and its suppliers will not be held responsible, liable or accountable for any injury, damage, loss, penalties, or fines that occur from using this product in any manner.

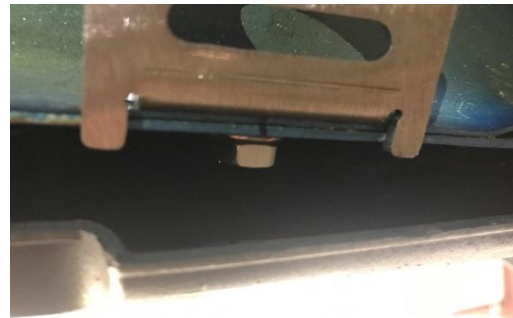


3gCustomz Side Splitter Installation Guide

1. For this install you will need to drill holes into your drip edge to install the brackets. There should be 6 brackets per side.
2. Line the side splitter up along the back drip edge of the rocker, center the splitter front to back. Then wedge or have a second person hold the splitter in place. This will allow you to mark the location where the brackets will need to be installed.
3. Mark holes on the drip edge with a paint pen or sharpie, drill pilot hole and then $\frac{1}{4}$ " Hole.
4. Use supplied $\frac{1}{4}$ "-20 x $\frac{3}{4}$ " Bolts, Lock Washers and Nuts to attach the bracket to the drip edge.



Bracket installed (Picture taken looking straight up under drip edge)



Rocker Panel pulled back just enough to expose nut and tighten (Picture taken looking straight up under drip edge)



Bracket installed (Picture taken looking at the backside of the bracket, eye level)



3gCustomz Side Splitter Installation Guide



6. Install Speed Nut on bracket – Speed nut may be adjusted so it aligns with splitter pre-drilled hole if need be.



8. Install ¼"-20x 3/4" bolt with washer and lock washer

7. Once all the holes and speed nuts are installed, line the side splitter up and work front to back installing one bolt at a time. Leave these loose until all have been installed, then work back to front tightening each bolt down.

*** REMINDER - THESE ARE SIDE SPLITTERS, DO NOT ATTEMPT TO STAND OR STEP ON SIDE SPLITTERS**

9. Once your installation is complete, it is highly recommend that you push/pull and try to flex your lip from as many different areas as possible. If you notice flex or movement it is suggest that you add additional fasteners to ensure the splitter is securely attached to the vehicle.

